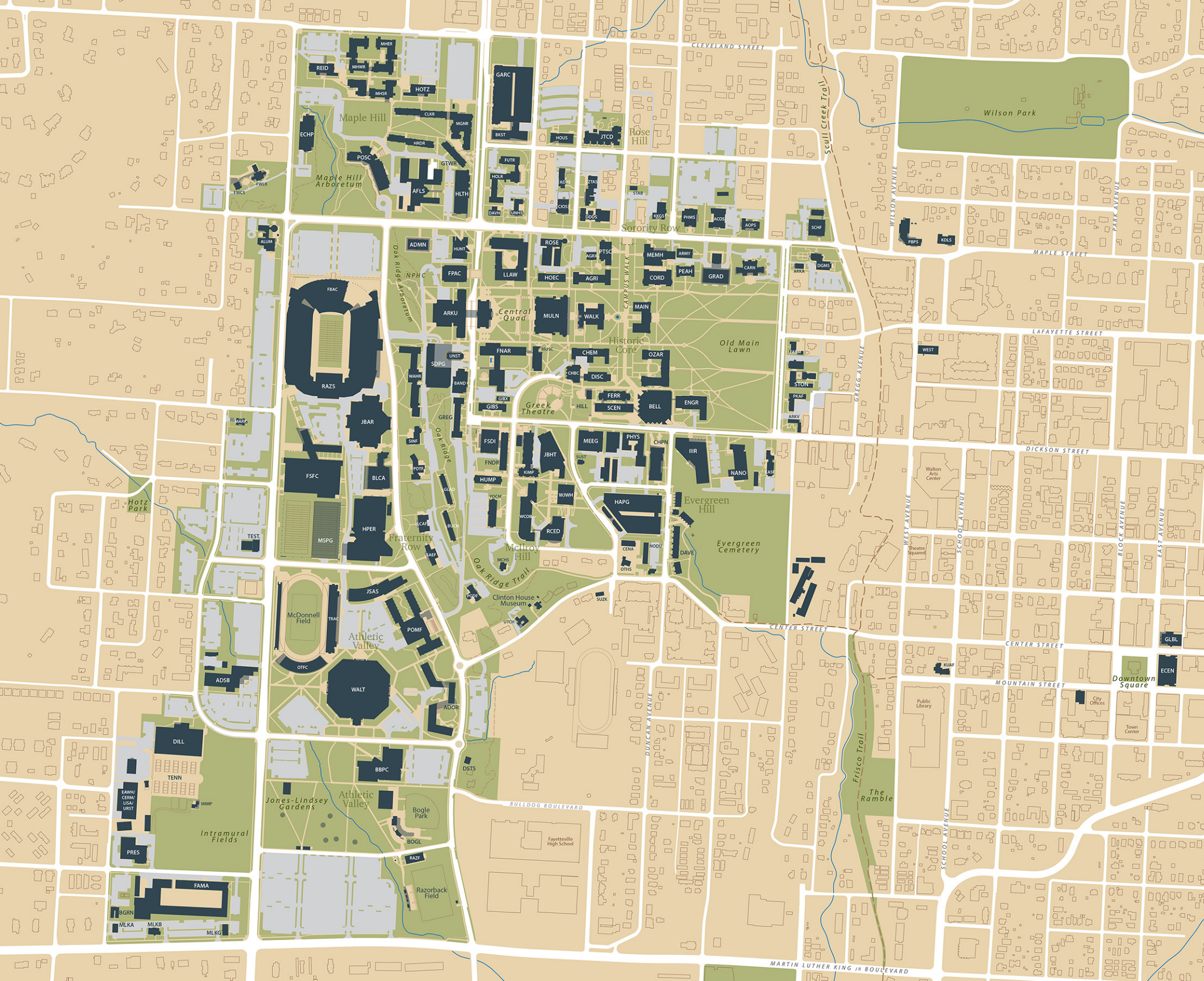




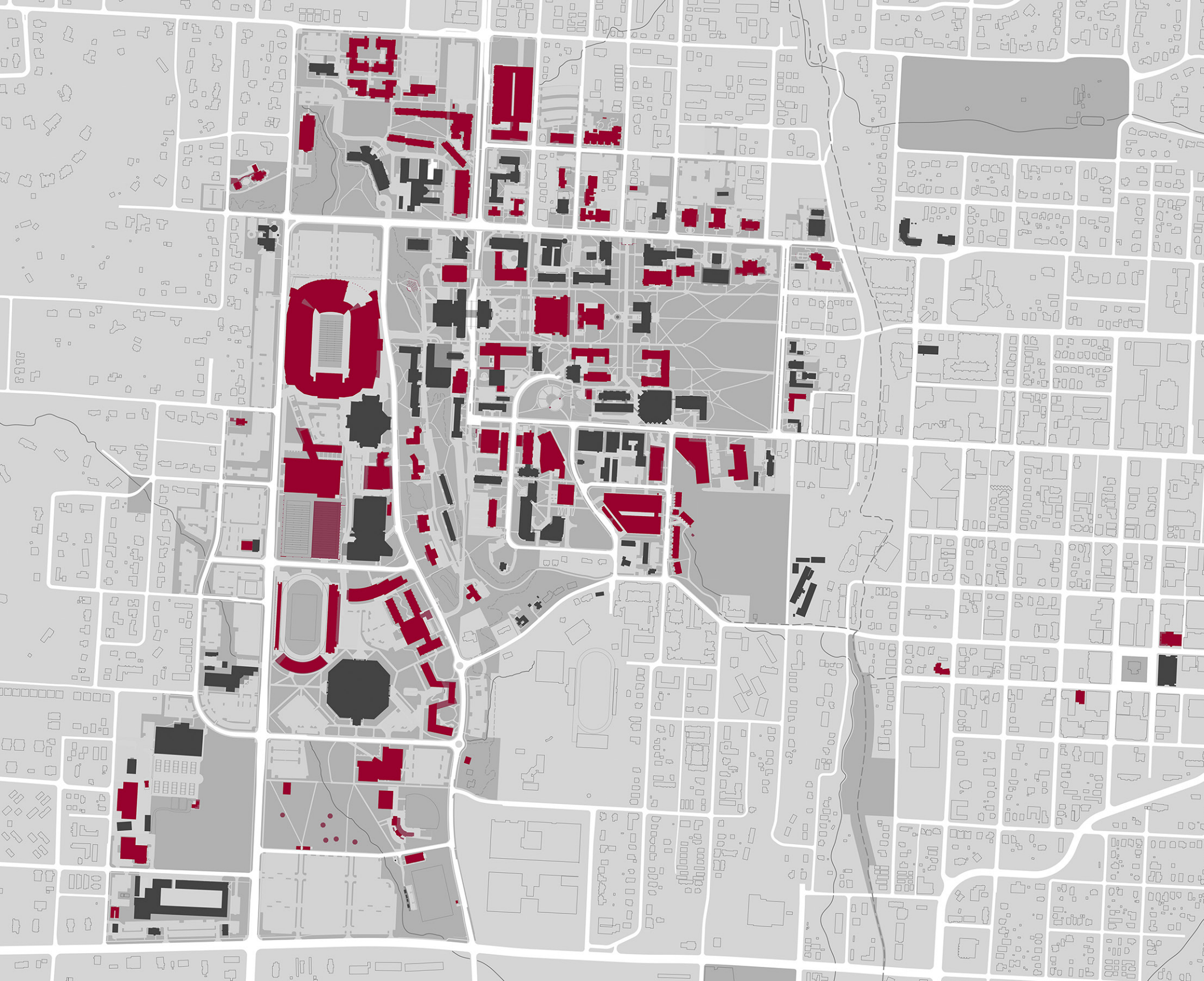
Scott Turley, PE, Associate Vice Chancellor for Facilities
Facilities Management





ENROLLMENT
has increased
100.4% since
2002

2002	16,035
2023	32,140
%	+100.4



BUILDING
since 2002

red =
new building or
full renovation



Current Budget: \$38,000,000

BOT Approval: 18 Sep 2020

A/E: MBL/ DBP

Completion Date: Summer 2024

CM/GC: Con-Real

Description:

Interior and exterior renovation of 55,000 SF of the facility, constructed in 1951. The exterior landscape and public spaces will be restored to their historic condition. Classrooms, concert hall, and library will be upgraded to meet current requirements.

Fine Arts Renovation



UNIVERSITY OF
ARKANSAS

Completion Scheduled
Fall 2024



Fine Arts Renovation



Current Budget: \$120.0M

BOT Approval: 26 May 2022

A/E: Hufft/HGA

CM/GC: CDI

Completion Date: Aug 2024

Description:

Construct new campus research facility to serve as a home to the Institute for Integrative & Innovative Research, (I3R).

Current program approx. 135,000 GSF with on campus site.

Institute for Integrative & Innovative Research



Completion Fall 2024



Institute for Integrative & Innovative Research



UNIVERSITY OF
ARKANSAS



Current Budget: \$14,400,000

BOT Approval: 17 Sep 2021

A/E: Hufft/HGA

CM/GC: CDI

Completion Date: Dec 2023

Description:

Project will fit out 3600 SF clean room with additional 3600 SF for mechanical equipment. Clean room will support research into fabrication and characterization of nanomaterials or semiconductor devices

NANO Clean Room Fit Out



Current Budget: \$35,500,000

BOT Approval: 27 Jan 2022

A/E: DeMx/Kennedy & Violich

CM/GC: Con Real

Completion Date: Summer 2025

Description:

Install fire sprinklers, abate asbestos, and renovate 116,000 SF on the 1st and 2nd floors to upgrade study and collaboration spaces as well as special collections. New basement level entrance on the south at the new café.

Mullins Library 1 & 2 Floor Renovation





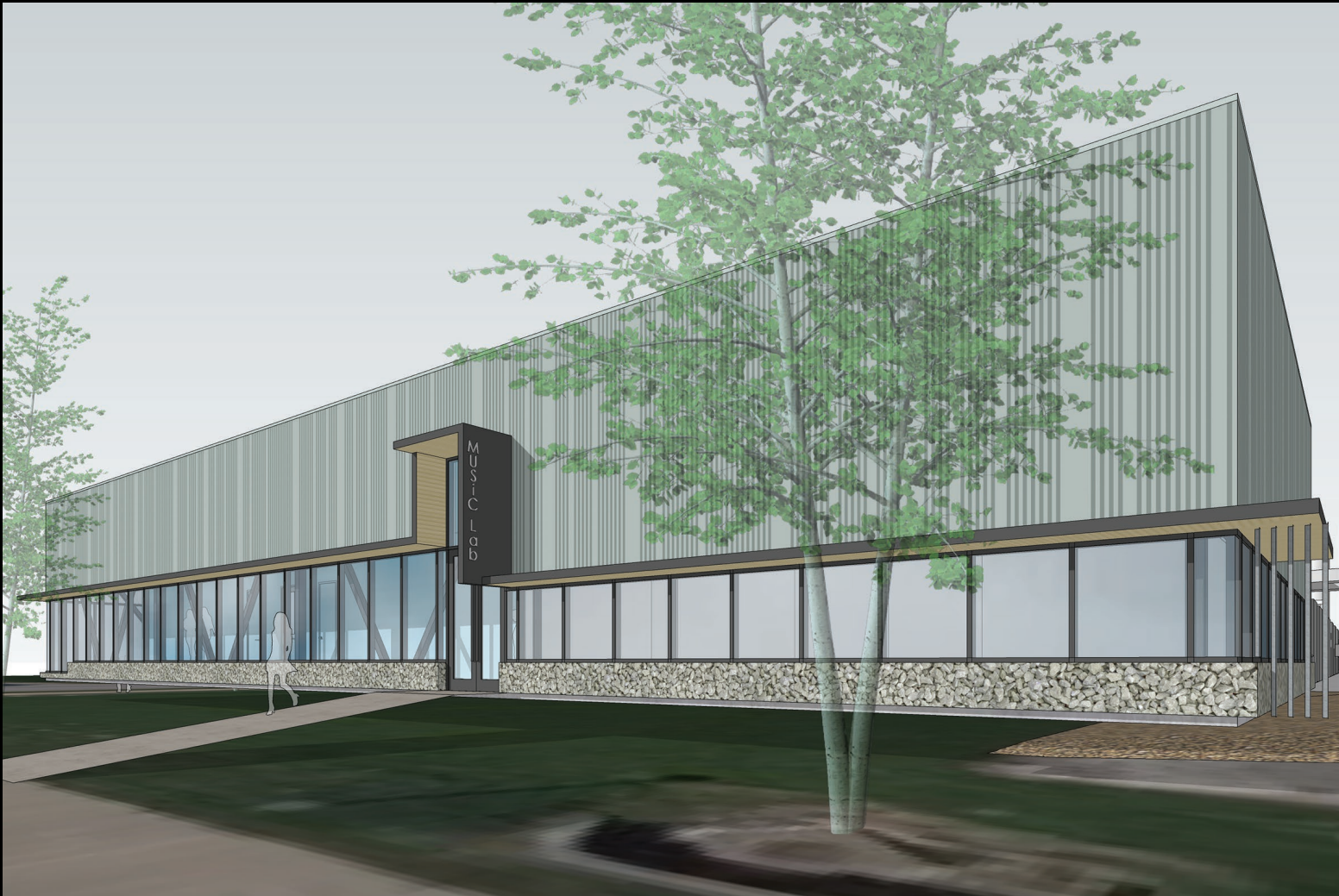
South Elevation



Mullins Library 1& 2 Floor Renovation



UNIVERSITY OF
ARKANSAS



Current Budget: \$36,145,000

BOT Approval: 26 May 2022

A/E: WD&D/Tsoi Kobus

CM/GC: Whiting-Turner

Completion Date: Fall 2024

Description:

Enabling scope was removed from this project. Project only includes the new facility. Current design includes an 18,645 GSF facility with 7,400 SF of clean room and clean room support space to support silicon carbide research.

MUSiC National Research Fabrication Facility



UNIVERSITY OF
ARKANSAS



Current Budget: \$39,700,000

BOT Approval: 26 May 2022

A/E: Modus/Grafton Architects

CM/GC: Nabholz

Completion Date: Spring 2025

Description:

Located in the NE corner of the Art & Design District, it will provide FJSOA space for timber and wood design graduate program and an applied research center for wood innovation. Designing to 41,000 SF of classroom, studio, conference, office, and fabrication space.



Anthony Timberlands Center
for Design and Materials Innovation





Current Budget: \$34,000,000

BOT Approval: 18 Nov 2021

A/E: Polk Stanley/Tsien-Williams

GC : Clark Contractors

Completion Date: TBD

Description:

Project will construct a new 58,000 SF facility containing professional-quality galleries. Current design reduced to 47,000 SF. It will allow for flow of faculty and students between the other two art buildings in the district.

Windgate Galleries





**Request for Qualifications – University Residential Design, Market Analysis, and Related Fields
UNIVERSITY HOUSING GROWTH STUDY**

The University of Arkansas Fayetteville, in accordance with the policies of the Board of Trustees, is soliciting responses from qualified teams including expertise in university residential design, campus urban design, market analysis, and related fields for the *University Housing Growth Study*.

The selection will be a two-part process.

Part One: Qualifications. Respondents will submit qualifications for review by a selection committee. The committee will shortlist up to five firms for interviews.

Part Two: Proposals. The top candidates identified by the selection committee will be asked to submit full written proposals including scope of services, project approach, work plan, schedule with key dates and milestones, and fees in response to a Request for Proposal document to be issued by the university. At least two weeks will be allowed for document preparation, and the final selection will be made on the basis of these proposals.

ABOUT THE UNIVERSITY

The University of Arkansas is the state’s flagship institution of higher education. It is classified by the Carnegie Foundation for the Advancement of Teaching as an R1 Doctoral University based on its research activity and other measures of scholarly productivity. Current total enrollment is 30,936, a number which has almost doubled during a twenty-year period of record growth. The university is made up of ten colleges and schools, several auxiliaries, and the various departments which serve to enable its academic mission and operate the campus. The campus is made up of 240 buildings on 540 acres at five main locations: Central Campus, Art and Design District, Arkansas Research and Technology Park, Uptown Campus, and Athletic South. University Housing operates 20 residence halls which house over 6,000 students in the Central Campus.

PROJECT DESCRIPTION

Background.

After a post-World War II boost, the University of Arkansas maintained a stable enrollment of 15,000 students or fewer for several decades, with a small decline in the mid-1980s. Due to this stability, the university was able to accommodate demand for on-campus housing with only incremental changes to its housing stock as needed. Starting in 2001, enrollment increased rapidly, passing 16,000 students for the first time in 2002 and 17,000 students in 2004. It quickly became apparent that the university’s culture of



**Request for Qualifications – Transportation Planners, Urban Designers, and Related Fields
PARKING GARAGE ASSESSMENT STUDY**

The University of Arkansas Fayetteville, in accordance with the policies of the Board of Trustees, is soliciting responses from qualified teams including expertise in transportation planning, urban design and architecture, and related fields for the *Parking Garage Assessment Study*.

ABOUT THE UNIVERSITY

The University of Arkansas is the state’s flagship institution of higher education. It is classified by the Carnegie Foundation for the Advancement of Teaching as an R1 Doctoral University based on its research activity and other measures of scholarly productivity. Current total enrollment is 30,936, a number which has almost doubled during a twenty-year period of record growth. The university is made up of ten colleges and schools, several auxiliaries, and the various departments which serve to enable its academic mission and operate the campus. The campus is made up of 240 buildings on 540 acres at five main locations: Central Campus, Art and Design District, Arkansas Research and Technology Park, Uptown Campus, and Athletic South.

PROJECT DESCRIPTION

Background.

The University of Arkansas maintained a stable enrollment of around 15,000 students during the 1970s, 80, and 90s, allowing the parking system to grow incrementally along with small changes in demand. In 2000, the university’s department of Transit and Parking managed an inventory of 9200 spaces. Starting in 2001, enrollment increased rapidly, passing 16,000 students for the first time in 2002 and 17,000 students in 2004. Two major projects meant to address that growth—the Northwest Quadrangle residence halls and Pat Walker Health Center—were completed in 2004 on the site of what was then the largest central campus parking lot, the loss of which prompted concerns about parking supply in the face of continuing enrollment growth.

Because the campus did not have a comprehensive approach to managing parking or its transportation systems in general, in 2004 the university commissioned the Campus Transportation Plan¹. This study—which involved significant data collection and analysis—was intended to address all modes of transportation, including pedestrians, bikes, private vehicles, busses, rideshare, etc., and how to better plan for them in the context of expected campus, city, and regional growth. The study recommended that

¹ The 2005 Campus Transportation Plan is available here:
https://planning.uark.edu/campus_planning/content/transportationplanmainstudy.pdf



**Request for Qualifications – Space Analytics and Related Design Fields
CAMPUS SPACE USE STUDY**

The University of Arkansas Fayetteville, in accordance with the policies of the Board of Trustees, is soliciting responses from qualified teams including expertise in space analytics and related design fields for the *Campus Space Use Study*.

The selection will be a two-part process.

Part One: Qualifications. Respondents will submit qualifications for review by a selection committee. The committee will shortlist up to five firms for interviews.

Part Two: Proposals. The top two candidates identified by the selection committee will be asked to submit full written proposals including scope of services, project approach, work plan, schedule with key dates and milestones, and fees in response to a Request for Proposal document to be issued by the university. At least three weeks will be allowed for document preparation, and the final selection will be made on the basis of these proposals.

ABOUT THE UNIVERSITY

The University of Arkansas is the state’s flagship institution of higher education. It is classified by the Carnegie Foundation for the Advancement of Teaching as an R1 Doctoral University based on its research activity and other measures of scholarly productivity. Current total enrollment is 30,936, a number which has almost doubled during a twenty-year period of record growth. The university is made up of ten colleges and schools, several auxiliaries, and the various departments which serve to enable its academic mission and operate the campus. The campus is made up of 240 buildings on 540 acres at five main locations: Central Campus, Art and Design District, Arkansas Research and Technology Park, Uptown Campus, and Athletic South. One hundred forty of these buildings, comprising over 4.5 million square feet, serve teaching, research, and administration. These “Education and General” buildings will be the focus of the study, along with small group of instructional spaces within auxiliary buildings.

PROJECT DESCRIPTION

Purpose.

This study is intended to determine how an optimal fit can be created between the university’s physical resources, its academic mission, and its operational culture, and to provide tools and processes for ongoing management of that fit. The study will take place in the context of continued undergraduate enrollment growth, an increasing institutional focus on publicly- and privately-funded research, and post-

University Housing Growth Study
2024

Parking Garage Assessment Study
2024

Campus Space Use Study
2024

Questions & Discussion

Scott Turley, PE
Facilities Management