



Scott Turley, PE, Associate Vice Chancellor for Facilities
Facilities Management



UNIVERSITY OF
ARKANSAS



Current Budget: \$38,000,000

BOT Approval: 18 Sep 2020

A/E: MBL/ DBP

Completion Date: Fall 2024

CM/GC: Con-Real

Description:

Interior and exterior renovation of 55,000 SF of the facility, constructed in 1951. The exterior landscape and public spaces will be restored to their historic condition. Classrooms, concert hall, and library will be upgraded to meet current requirements.

Fine Arts Renovation



UNIVERSITY OF
ARKANSAS

Completion Scheduled
Fall 2024



Fine Arts Renovation



UNIVERSITY OF
ARKANSAS



Current Budget: \$120.0M

BOT Approval: 26 May 2022

A/E: Hufft/HGA

CM/GC: CDI

Completion Date: Fall 2024

Description:

Construct new campus research facility to serve as a home to the Institute for Integrative & Innovative Research, (I3R). Current program approx. 135,000 GSF with on campus site.

Institute for Integrative & Innovative Research



UNIVERSITY OF
ARKANSAS

Completion Fall 2024



Institute for Integrative & Innovative Research



UNIVERSITY OF
ARKANSAS

Current Budget: \$14,400,000

BOT Approval: 17 Sep 2021

A/E: Hufft/HGA

CM/GC: CDI

Completion Date: Dec 2023

Description:

Project will fit out 3600 SF clean room with additional 3600 SF for mechanical equipment. Clean room will support research into fabrication and characterization of nanomaterials or semiconductor devices

NANO Clean Room Fit Out



UNIVERSITY OF
ARKANSAS



Current Budget: \$35,500,000

BOT Approval: 27 Jan 2022

A/E: DeMx/Kennedy & Violich

CM/GC: Con Real

Completion Date: Summer 2025

Description:

Install fire sprinklers, abate asbestos, and renovate 116,000 SF on the 1st and 2nd floors to upgrade study and collaboration spaces as well as special collections. New basement level entrance on the south at the new café.

Mullins Library 1 & 2 Floor Renovation



UNIVERSITY OF
ARKANSAS



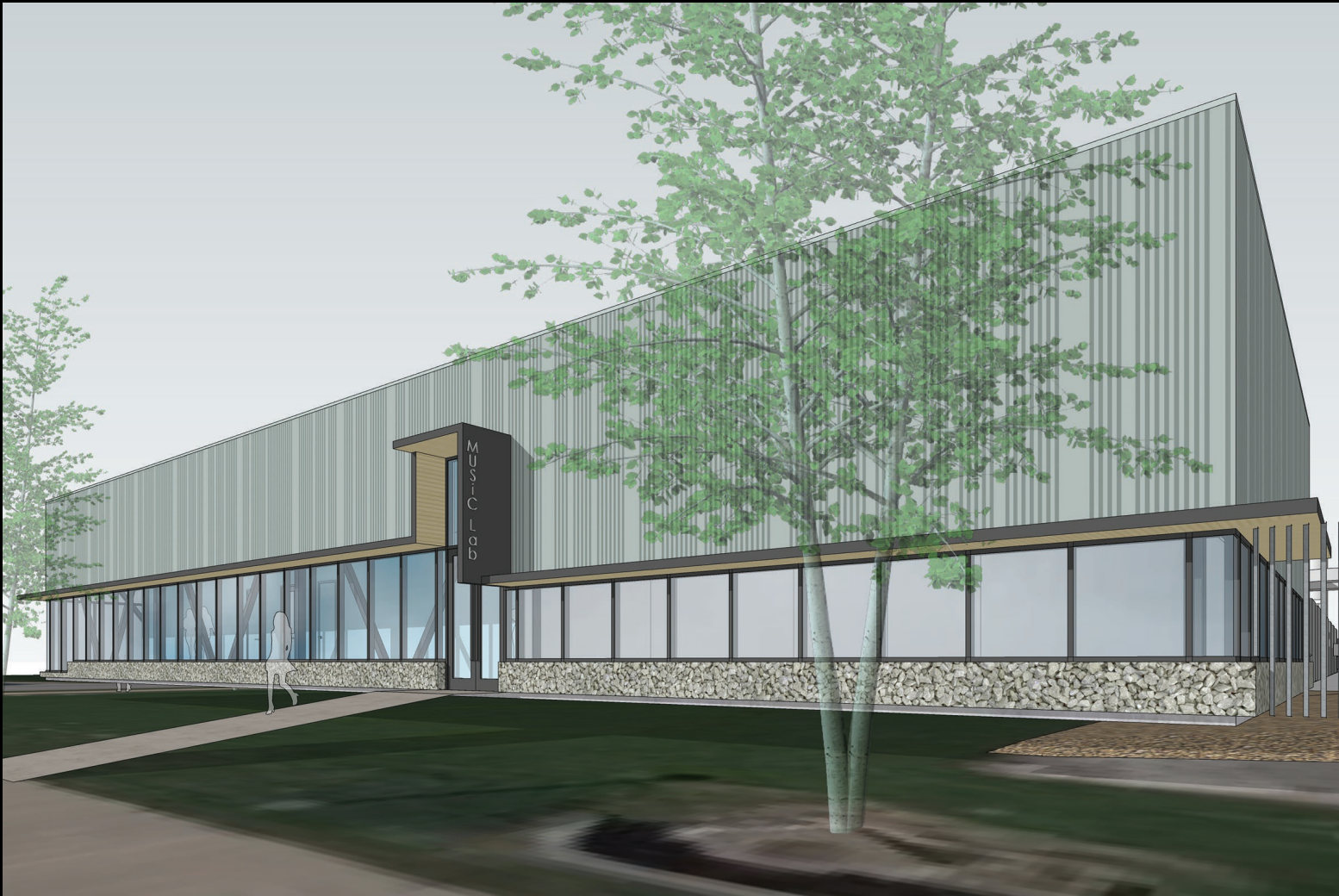
South Elevation



Mullins Library 1& 2 Floor Renovation



UNIVERSITY OF
ARKANSAS



Current Budget: \$36,145,000

BOT Approval: 26 May 2022

A/E: WD&D/Tsoi Kobus

CM/GC: Whiting-Turner

Completion Date: Jan 2025

Description:

Enabling scope was removed from this project. Project only includes the new facility.

Current design includes an 18,645 GSF facility with 7,400 SF of clean room and clean room support space to support silicon carbide research.

MUSiC National Research Fabrication Facility



UNIVERSITY OF
ARKANSAS



Current Budget: \$39,700,000

BOT Approval: 26 May 2022

A/E: Modus/Grafton Architects

CM/GC: Nabholz

Completion Date: Spring 2025

Description:

Located in the NE corner of the Art & Design District, it will provide FJSOA space for timber and wood design graduate program and an applied research center for wood innovation. Designing to 41,000 SF of classroom, studio, conference, office, and fabrication space.

Anthony Timberlands Center
for Design and Materials Innovation



UNIVERSITY OF
ARKANSAS



Current Budget: \$34,000,000

BOT Approval: 18 Nov 2021

A/E: Polk Stanley/Tsien-Williams

GC : Clark Contractors

Completion Date: TBD

Description:

Project will construct a new 58,000 SF facility containing professional-quality galleries. Current design reduced to 47,000 SF. It will allow for flow of faculty and students between the other two art buildings in the district.

gate Galleries



UNIVERSITY OF
ARKANSAS

Task	Task #	Sub-Task	Sub-Task Parts	2024												
				JAN	FEB	MAR	APR	MAY	JUN	JUL	AUG	SEP	OCT	NOV	DEC	
COLLECTING AND VALIDATING DATA	0	Project Initiation	Virtual kick-off and campus visit	█												
	1A	Assess Existing University Data	Assess University data collection processes	█												
			Assess scope, accuracy, and timeliness of University data	█	█											
			Conduct preliminary analysis and exceptions report		█											
			Determine scope for SmithGroup data collection		█											
	1B	Collect and Analyze Data for all Education and General Buildings	Quantitative: facilities inventory verification			█	█									
			Qualitative: educational adequacy			█	█									
			Student and Faculty perceptions (MapMyCampus)				█	█								
			Analysis and evaluation					█	█							
			Documentation and presentation							█						
	1C	Study Campus Culture and Demographic Trends	Hybrid office space analysis				█									
			Student demographic trends at the University				█									
			Pedagogy expectations at the University				█									
			Space need projections					█	█							
1D	Compare the University to Best Practices and Peer Institutions	Benchmark space				█	█									
		Benchmark space management practices				█	█									
		Benchmark accreditation standards				█	█									
PRESENTING THE BASELINE DATA AND ANALYSIS	2		Present patterns of space underutilization and misalignment					█								
			Build consensus with leadership							█	█					
MAKING RECOMMENDATIONS	3	Recommend how to make more efficient and effective use of space	Classroom/lab scheduling and space standards										█			
			Assigning and managing research space										█			
			Faculty and staff workspace											█		
			Assign sites for new buildings												█	
			Scenarios development and visualization													█
Documentation and presentation														█		
PROVIDING TOOLS AND PROCESSES FOR ONGOING UNIVERSITY USE	4	Implementation	Appropriate staffing structures, procedures, and policies													█
			Space management tools													

█ = anticipated campus visits

Campus Space Use Study – SMITHGROUP



UNIVERSITY OF ARKANSAS

What's next?



UNIVERSITY OF
ARKANSAS