

The University of Arkansas Experience

Sponsored by

The Division of Student Affairs

In partnership with:

Academic Affairs

Enrollment Services

Finance and Administration

University Advancement

First Year Experience (FYE)

Program will:

- ✓ Create a personal support structure centered around each student's academic career
- ✓ Provide transitional support to all students entering this new and challenging community
- ✓ Integrate new students into an environment that honors a diverse culture

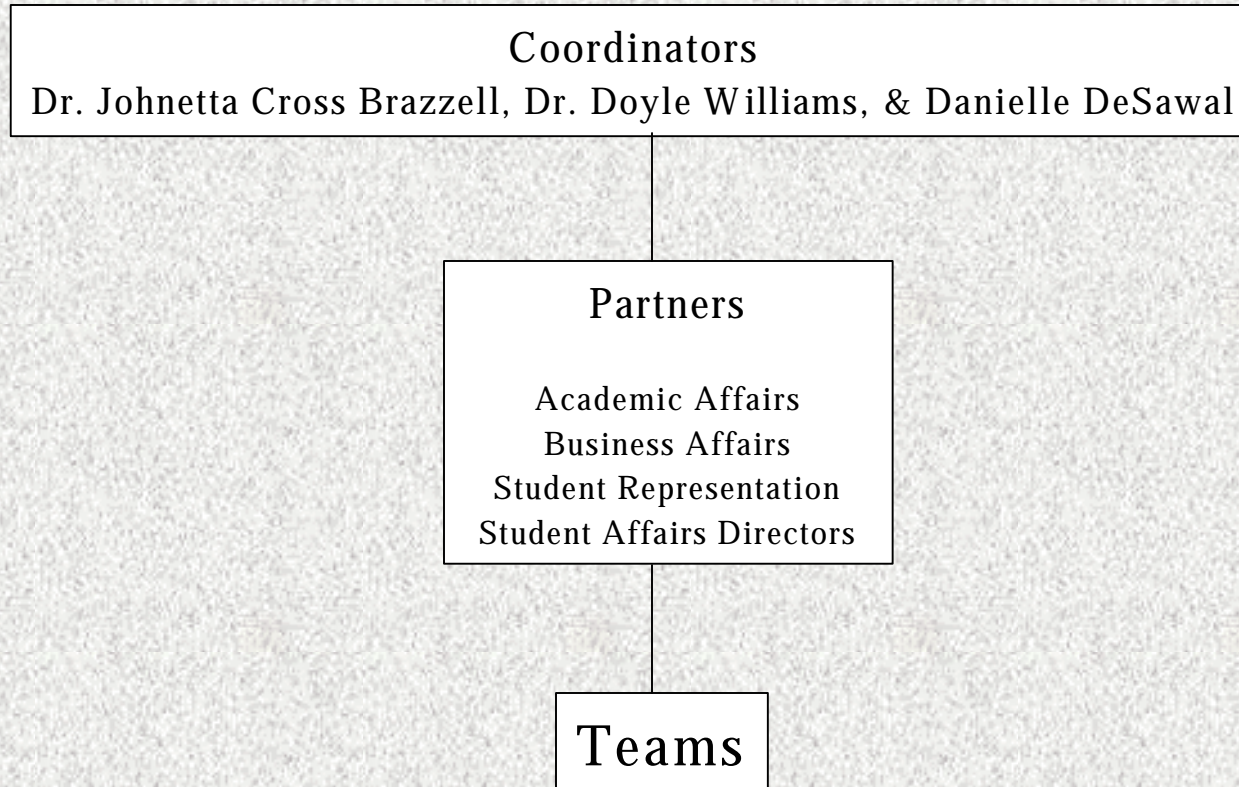
The FYE Outcomes:

- ✓ Help students to better understand themselves;
- ✓ Motivate students to become intellectually engaged;
- ✓ Create a strong bond to the institution.

Impact on Retention

- ✓ The First Year Experience will ultimately improve retention and graduation rates among our students. The six-year graduation rate (based on 1996 data) for the University of Arkansas is 41%. With the freshman class of 1998, we have begun to position the University toward a graduation rate of 66% that compares with our peer institutions-the major state universities and land-grant institution in the Southeastern Conference, the Atlantic Coast Conference, the Big 10 and the Big 12.

The Structural Model



FYE Partners

- ❖ Alberta Bailey
- ❖ Earlene Baker
- ❖ Becky Baumann
- ❖ Karen Boston
- ❖ Jesse Branch
- ❖ Julie Cain
- ❖ Thomas Carter III
- ❖ Arlene Cash
- ❖ Jim Conneely
- ❖ Claudia Driver
- ❖ Suzanne Gordon
- ❖ Shannon Humphrey
- ❖ Patricia Koski
- ❖ Dionne Klingensmith
- ❖ Lesley Landes
- ❖ Melissa Lester
- ❖ Andrew Lilly
- ❖ Mike Macechko
- ❖ Gary McHenry
- ❖ Debra Miller
- ❖ Jonathan Perry
- ❖ Nola Royster
- ❖ Tom Rufer
- ❖ Mary Alice Serafini
- ❖ Karen Stauffacher
- ❖ Keri Steffes
- ❖ Laura Terry

FYE Teams

- ✓ Pre-Orientation
- ✓ Extended Orientation
- ✓ Residential Task Force
- ✓ Advising, Mentoring,
& Tutoring
- ✓ Service Learning
- ✓ Multicultural
Programming
- ✓ Campus Programming
- ✓ Program Evaluation
- ✓ Greek Enhancement

Recommendations for the Development of a FYE Program

- ✓ 46 Recommendations
 - Greek Enhancement--February 2000
- ✓ Clustered into 14 Groups
- ✓ FYE Program Recommendations Ranking
- ✓ Top 25 recommendations will become the core emphasis of the program
- ✓ Remaining recommendations will be examined in phases

FYE Program Core Emphasis

- ✓ Introduction to the University of Arkansas
- ✓ Adjustment to the U of A During the First Week
- ✓ Establishing a Safe & Comfortable Environment

Introduction to the University of Arkansas

✓ Evaluate the Orientation Program

- Work in cooperation with the Orientation Advisory Board
- Collect and Summarize “Expectations for New UA Students”
 - Timeline for Implementation:
 - Create Committee Fall 2000
 - Convene Committee February 2000
 - Recommendations Implemented Summer 2001

✓ Establish a Graduate Student Orientation

- Survey current graduate students
 - Timeline for Implementation
 - Create Committee February 2000
 - Orientation Implemented Summer 2001

Introduction to the University of Arkansas

✓ Establish/Enhance Centralized Advising Centers & Programs

- Establish specialized advising for freshmen and first semester students
- Provide training for professional staff on Advisor Development

- Timeline for Implementation:

- Each College has individual advising program Fall 2000
- Training for all faculty & professional staff Spring 2001

Introduction to the University of Arkansas

✓ Enhance New Faculty Orientation with Diversity Components

- Timeline for Implementation:
 - Start Date Spring 2000
 - Implementation Date Fall 2000

✓ Strategize & Coordinate Contact of Potential Students

- Progressive personalized contacts should begin in the eighth grade
 - Timeline for Implementation:
 - Planning Committee Formed August 1999
 - Recommendations Presented June 1, 2000
 - Recommendations Implemented Fall 2001

Adjustment to the U of A During the First Week

- ✓ Building a Sense of Community
- ✓ Examine & Restructure Welcome Week
 - Establish a committee to examine the events that are included in Welcome Week
 - First week activities to a four (4) day format rather than an eight (8) day format
 - Timeline of Implementation:

– Start Date	Spring 2000
– Implementation Date	Fall 2000

Adjustment to the U of A During the First Week

✓ Establish a Campus Events & Activities Listserv Option/Increase Campus Media Promotion of Activities

- Timeline for Implementation:

- Start Date Spring 2000
- Implementation Date Spring 2000

✓ Create Informational Kiosk's & Marquee Boards

- Timeline for Implementation:

- Start Date Spring 2000
- Implementation Date Fall 2001

Establishing a Safe & Comfortable Environment

✓ First Year Residential Program

- Pomfret B-Wing
- Futrall Hall
- Re-structure staffing to better meet the needs of the residents
 - Timeline for Implementation:
 - Start Date Fall 1999
 - Implementation Date Fall 2000

✓ Recruit, Retain, & Promote an Increase in Faculty/Staff of Color

- Timeline for Implementation:
 - Start Date Spring 2000
 - Implementation Date Ongoing

Establishing a Safe & Comfortable Environment

- ✓ Develop a General Marketing Strategy for the First Six (6) Weeks
- ✓ Establish a First Year Seminar Course/Include Multicultural Education
 - A First Year Experience Class will be taught in each college for one credit
 - The Curriculum will include 13 core components
 - Timeline for Implementation:

– Market and Train Staff	Spring 2000
– Write Class Syllabus	Summer 2000
– 75% FY Students enrolled	Fall 2000

Seminar Course: 13 Core Components

- Transition from High School to College
- Self-responsibility
- Motivation to Reach Your Potential
- The University Education
- History of the University
- Analytical Thinking
- Academic Integrity
- Involvement
- Critical Thinking--
Analyzing Media Messages
- Enhancing Cross-Cultural Growth & Understanding
- Careers
- Values & Goals
- The Library

Establishing a Safe & Comfortable Environment

- ✓ Implement Late Night & Weekend Programming
 - Create programming fund that groups can apply to for alcohol alternative programs
 - Divert HPER fee to Recreation & Intramural sports after bonds are paid off
 - Timeline for Implementation:

– Start Date	Spring 2000
– Implementation Date	Fall 2000
- ✓ Increase Diverse Programming
 - Timeline for Implementation:

– Start Date	Spring 2000
– Implementation Date	Spring 2000

Establishing a Safe & Comfortable Environment

✓ Establish/Enhance Individual Mentor Programs

- Each college will be responsible for a mentoring plan & program

- Timeline for Implementation:

- Start Date Summer 2000
- Implementation Date Fall 2000

✓ Develop an Incentive Program for Participation in FYE Program

- Timeline for Implementation:

- Start Date Spring 2000
- Implementation Date Fall 2000

Strategy for Implementation

✓ First Year Experience Marketing Team

✓ Phases for Implementation

– All Recommendations will be examined

- Establishing Year Long Programming Efforts
- Examination of Curriculum Content
- Examination of the Classroom Environment
- Providing Training and Education Programs
- Providing Support of Campus Programming Efforts

Campus-Wide Collaborative Initiative

UA Experience Coordinators

Danielle De Sawal, Office of the Vice Chancellor
Sylvia Scott, Director of Student Involvement
Campus Representative

UA Experience Overview Team

FYE Partners
Student Affairs Representatives
Student Representatives
University Representatives
Faculty Representatives

Project Implementation Teams

UA Experience Overview: Project Implementation Teams

- ✓ Examine and Re-structure Welcome Week
- ✓ Develop a General Marketing Strategy for the First Six (6) Weeks
- ✓ Establish an Academic Convocation
- ✓ Establish a Campus Programming Committee
- ✓ Develop a University Code and Creed
- ✓ Compile a Directory of Multicultural Programs Across Campus